

WALTER KNOLL

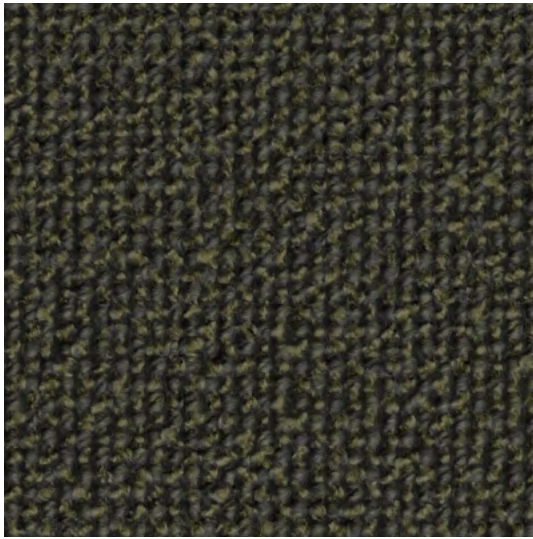


STOFFE MIT BRANDSCHUTZ 2026/27
Fabrics Fire-Resistant 2026/27

INHALT / CONTENT

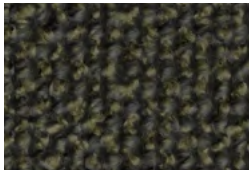
AURENE FR	Seite/page 3	SAVANNAH FR	Seite/page 10
DOUX FR	Seite/page 4	SELENE FR	Seite/page 11
GLINT FR	Seite/page 5	TAPIS FR	Seite/page 12
LUCIA FR	Seite/page 6	TOGBA FR	Seite/page 13
NAMIB FR	Seite/page 7	TONGA FR	Seite/page 14
RUBAN FR	Seite/page 8	WEAVE FR	Seite/page 15
SAFIRE FR	Seite/page 9	NATURAL ELEGANCE FARBWELTEN / NATURAL ELEGANCE COLOR WORLDS	Seite/page 16

AURENE FR



7983 MOSS

Material <i>Material</i>	34% Baumwolle/ <i>Cotton</i> 33% Wolle/ <i>Wool</i> 19% Polyacrylnitril/ <i>Polyacrylonitrile</i> 8% Polyamid/ <i>Polyamide</i> 6% Polyester/ <i>Polyester</i>
Stoffart <i>Fabric type</i>	Bouclé <i>Bouclé</i>
Scheuertouren <i>Martindale cycles</i>	90.000
Lichtechtheit <i>Fastness to light</i>	5–7 (ISO 1–8)
Brandschutz <i>Fire protection</i>	BS 5852 Part 1 Ignition Source 0 BS 5852 Part 1 Ignition Source 1 Cal. TB 117-2013 DIN EN 1021 Part 1+2
Pflegehinweise <i>Care cleaning</i>	    
Preisgruppe <i>Price group</i>	40



7983 MOSS
Natural Elegance Moonlight FR





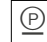


7982 BELLADONNA
Natural Elegance Africa FR

DOUX FR

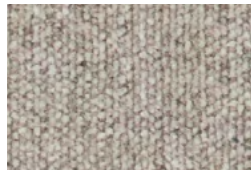


7841 SAND

Material <i>Material</i>	35% Wolle/ <i>Wool</i> 35% Viskose/ <i>Viscose</i> 21% Baumwolle/ <i>Cotton</i> 9% Polyamid/ <i>Polyamide</i>
Stoffart <i>Fabric type</i>	Chenille <i>Chenille</i>
Scheuertouren <i>Martindale cycles</i>	25.000
Lichtechtheit <i>Fastness to light</i>	4–6 (ISO 1–8)
Brandschutz <i>Fire protection</i>	BS 5852 Part 1 Ignition Source 0 BS 5852 Part 1 Ignition Source 1 Cal. TB 117-2013 DIN EN 1021 Part 1+2
Pflegehinweise <i>Care cleaning</i>	    
Preisgruppe <i>Price group</i>	30



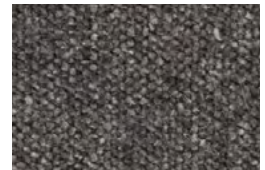
7843 PEBBLE
Natural Elegance Doux FR



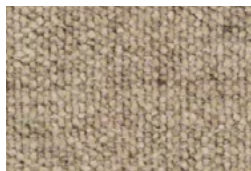
7844 GREIGE
Natural Elegance Doux FR



7842 MINERAL
Natural Elegance Doux FR



7840 GRANITE
Natural Elegance Doux FR








7841 SAND
Natural Elegance Doux FR

GLINT FR



7778 STONE

Material <i>Material</i>	53% Leinen/ <i>Linen</i> 19% Baumwolle/ <i>Cotton</i> 16% Viskose/ <i>Viscose</i> 8% Nylon/ <i>Nylon</i> 4% Polyamid/ <i>Polyamide</i>
Stoffart <i>Fabric type</i>	Flachgewebe <i>Flat woven fabric</i>
Scheuertouren <i>Martindale cycles</i>	25.000
Lichtechtheit <i>Fastness to light</i>	4–5 (ISO 1–8)
Brandschutz <i>Fire protection</i>	BS 5852 Part 1 Ignition Source 0 BS 5852 Part 1 Ignition Source 1 Cal. TB 117-2013
Pflegehinweise <i>Care cleaning</i>	    
Preisgruppe <i>Price group</i>	26



7764 MELANGE
Natural Elegance Melange FR



7763 SILVER
Natural Elegance Off White FR



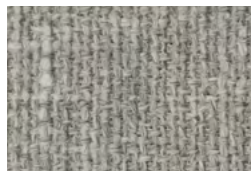
7761 SHADOW
Natural Elegance Shadow FR



7762 ASH
Natural Elegance Chess FR

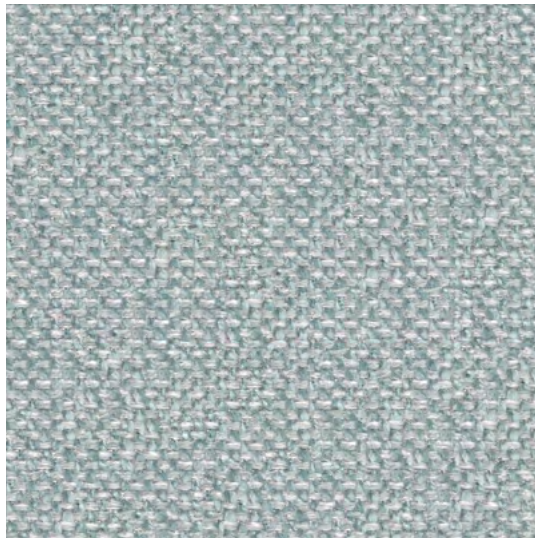


7760 STEEL
Natural Elegance Chess FR








7778 STONE
Natural Elegance Shadow FR

LUCIA FR



7704 GLACIER

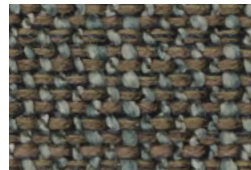
Material <i>Material</i>	30% Baumwolle/ <i>Cotton</i> 28% Viskose/ <i>Viscose</i> 13% Wolle/ <i>Wool</i> 13% Polyacryl/ <i>Polyacrylic</i> 9% Leinen/ <i>Linen</i> 4% Seide/ <i>Silk</i> 3% Nylon/ <i>Nylon</i>
Stoffart <i>Fabric type</i>	Flachgewebe <i>Flat woven fabric</i>
Scheuertouren <i>Martindale cycles</i>	50.000
Lichtechtheit <i>Fastness to light</i>	4–6 (ISO 1–8)
Brandschutz <i>Fire protection</i>	BS 5852 Part 1 Ignition Source 0 BS 5852 Part 1 Ignition Source 1 Cal. TB 117-2013
Pflegehinweise <i>Care cleaning</i>	    
Preisgruppe <i>Price group</i>	26



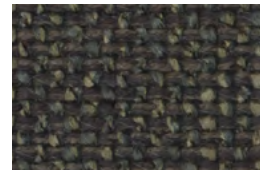
7685 OFF WHITE
Natural Elegance Off White FR



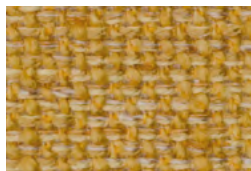
7704 GLACIER
Natural Elegance Shadow FR



7681 MINERAL
Natural Elegance Chess FR



7680 MOONLIGHT
Natural Elegance Chess FR



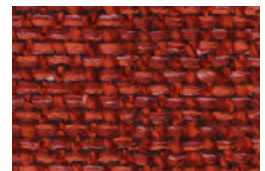
7694 CORN
Natural Elegance Africa FR



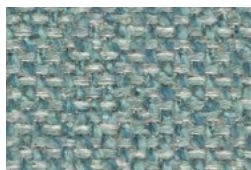
7739 LAGOON
Natural Elegance Moonlight FR



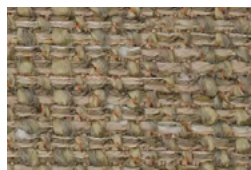
7688 TURQUOISE
Natural Elegance Africa FR



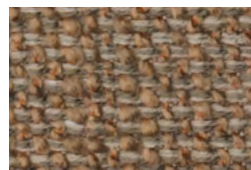
7686 TOMATO
Natural Elegance Africa FR



7729 AQUAMARINE
Natural Elegance Moonlight FR

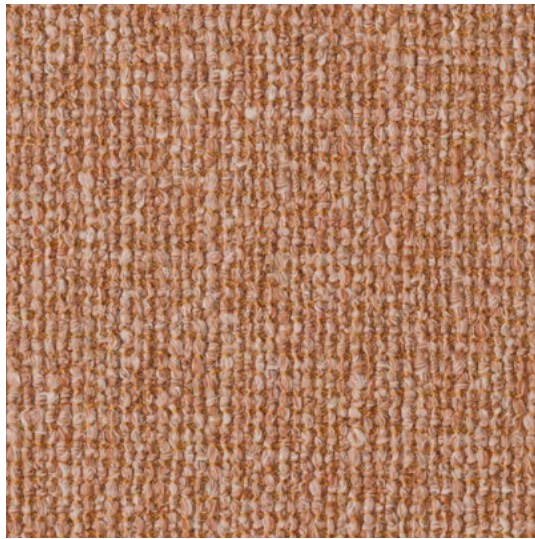


7695 NUTMEG
Natural Elegance Timber FR








7698 CINNAMON
Natural Elegance Timber FR

NAMIB FR



7923 ROOIBOS

Material <i>Material</i>	33% Leinen/Linen 20% Baumwolle/Cotton 20% Wolle/Wool 18% Viskose/Viscose 9% Polyester/Polyester
Stoffart <i>Fabric type</i>	Flachgewebe <i>Flat woven fabric</i>
Scheuertouren <i>Martindale cycles</i>	35.000
Lichtechtheit <i>Fastness to light</i>	5 (ISO 1–8)
Brandschutz <i>Fire protection</i>	BS 5852 Part 1 Ignition Source 0 BS 5852 Part 1 Ignition Source 1 Cal. TB 117-2013 DIN EN 1021 Part 1+2
Pflegehinweise <i>Care cleaning</i>	    
Preisgruppe <i>Price group</i>	30



7920 MOON
Natural Elegance Moonlight FR



7921 ORYX
Natural Elegance Moonlight FR



7924 LIMESTONE
Natural Elegance Chess FR



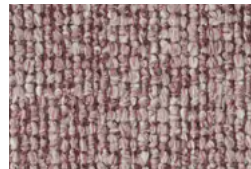
7926 REED
Natural Elegance Moonlight FR



7922 MARULA
Natural Elegance Africa FR



7923 ROOIBOS
Natural Elegance Africa FR

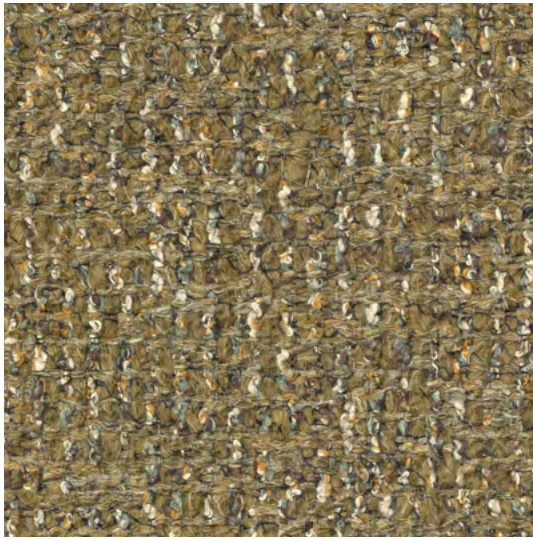


7927 RED SAND
Natural Elegance Africa FR








7925 AQUA
Natural Elegance Chess FR

RUBAN FR



7946 MOSS

Material <i>Material</i>	23% Leinen/ <i>Linen</i> 22% Viskose/ <i>Viscose</i> 20% Polyester/ <i>Polyester</i> 19% Polyacryl/ <i>Polyacrylic</i> 16% Baumwolle/ <i>Cotton</i>
Stoffart <i>Fabric type</i>	Flachgewebe <i>Flat woven fabric</i>
Scheuertouren <i>Martindale cycles</i>	30.000
Lichtechtheit <i>Fastness to light</i>	4–5 (ISO 1–8)
Brandschutz <i>Fire protection</i>	BS 5852 Part 1 Ignition Source 0 BS 5852 Part 1 Ignition Source 1 Cal. TB 117-2013 DIN EN 1021 Part 1+2
Pflegehinweise <i>Care cleaning</i>	    
Preisgruppe <i>Price group</i>	32



7940 MILKY QUARTZ
Natural Elegance Melange FR



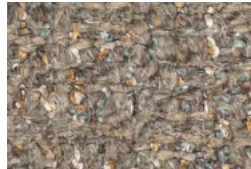
7941 LIGHT GREY
Natural Elegance Off White FR



7942 ONYX
Natural Elegance Chess FR



7944 ECRU
Natural Elegance Timber FR



7945 FLINTSTONE
Natural Elegance Shadow FR



7946 MOSS
Natural Elegance Shadow FR








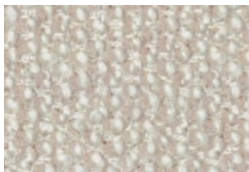
7943 ROSY
Natural Elegance Africa FR

SAFIRE FR



0014 DESERT

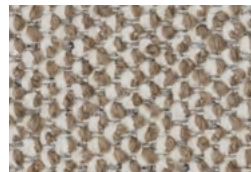
Material <i>Material</i>	43% Viskose/ <i>Viscose</i> 17% Polyacryl/ <i>Polyacrylic</i> 15% Schurwolle/ <i>Pure new wool</i> 9% Baumwolle/ <i>Cotton</i> 8% Leinen/ <i>Linen</i> 8% Polyester/ <i>Polyester</i>
Stoffart <i>Fabric type</i>	Bouclé, Chenille Flachgewebe <i>Bouclé, Chenille flat woven fabric</i>
Scheuertouren <i>Martindale cycles</i>	30.000
Lichtechtheit <i>Fastness to light</i>	5–6 (ISO 1–8)
Brandschutz <i>Fire protection</i>	BS 5852 Part 1 Ignition Source 0 BS 5852 Part 1 Ignition Source 1 Cal. TB 117-2013 DIN EN 1021 Part 1+2
Pflegehinweise <i>Care cleaning</i>	    
Preisgruppe <i>Price group</i>	40



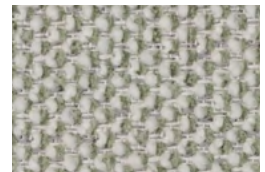
0007 CHAMPAGNE
Natural Elegance Off White FR



0014 DESERT
Natural Elegance Off White FR

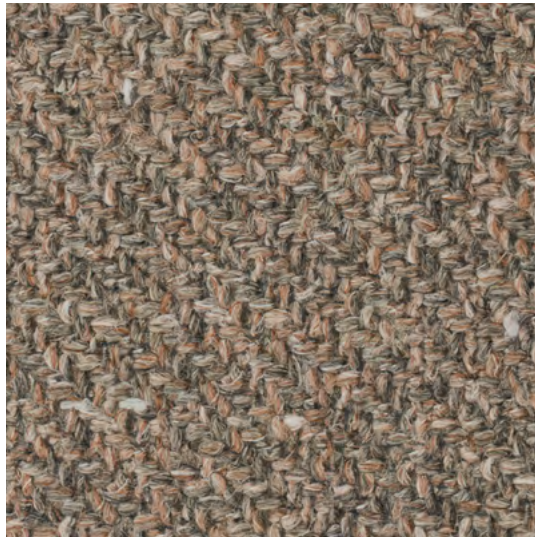


0004 SOIL
Natural Elegance Timber FR








0006 SAGE
Natural Elegance Shadow FR

SAVANNAH FR



7881 CARLINE

Material	44% Leinen/Linen
Material	21% Baumwolle/Cotton
	13% Viskose/Viscose
	11% Schurwolle/Pure new wool
	7% Polyester/Polyester
	4% Polyacryl/Polyacrylic
Stoffart	Flachgewebe
Fabric type	Flat woven fabric
Scheuertouren	20.000
Martindale cycles	
Lichtechtheit	5 (ISO 1-8)
Fastness to light	
Brandschutz	BS 5852 Part 1 Ignition Source 0
Fire protection	BS 5852 Part 1 Ignition Source 1
Pflegehinweise	    
Care cleaning	
Preisgruppe	28
Price group	



7883 PLATINUM
Natural Elegance Shadow FR



7880 GLYCINE
Natural Elegance Shadow FR



7881 CARLINE
Natural Elegance Timber FR



7882 ROSE
Natural Elegance Timber FR





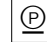


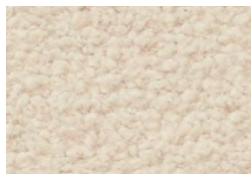
7884 JADE
Natural Elegance Shadow FR

SELENE FR



8001 AUBURN

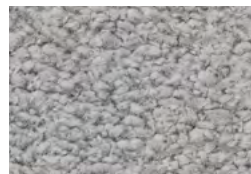
Material <i>Material</i>	63% Baumwolle/ <i>Cotton</i> 37% Polyester/ <i>Polyester</i>
Stoffart <i>Fabric type</i>	Chenille Flachgewebe <i>Chenille flat woven fabric</i>
Scheuertouren <i>Martindale cycles</i>	50.000
Lichtechtheit <i>Fastness to light</i>	5 (ISO 1 – 8)
Brandschutz <i>Fire protection</i>	BS 5852 Part 1 Ignition Source 0 BS 5852 Part 1 Ignition Source 1 Cal. TB 117-2013
Pflegehinweise <i>Care cleaning</i>	    
Preisgruppe <i>Price group</i>	30



7997 COTTON
Natural Elegance Off White FR



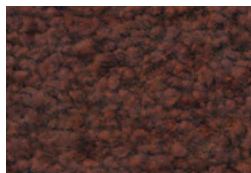
7998 COQUINA
Natural Elegance Off White FR



7999 TIN
Natural Elegance Melange FR



8000 OPALINE
Natural Elegance Moonlight FR



8001 AUBURN
Natural Elegance Africa FR



8002 GRAPHITE
Natural Elegance Chess FR

TAPIS FR



7980 ALABASTER

Material
Material 34% Baumwolle/*Cotton*
33% Wolle/*Wool*
19% Polyacrylnitril/*Polyacrylonitrile*
8% Polyamid/*Polyamide*
6% Polyester/*Polyester*

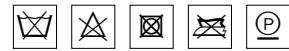
Stoffart
Fabric type Bouclé
Bouclé

Scheuertouren
Martindale cycles 90.000

Lichtechtheit
Fastness to light 5–7 (ISO 1–8)

Brandschutz
Fire protection BS 5852 Part 1 Ignition Source 0
BS 5852 Part 1 Ignition Source 1
Cal. TB 117-2013
DIN EN 1021 Part 1+2

Pflegehinweise
Care cleaning



Preisgruppe
Price group 30

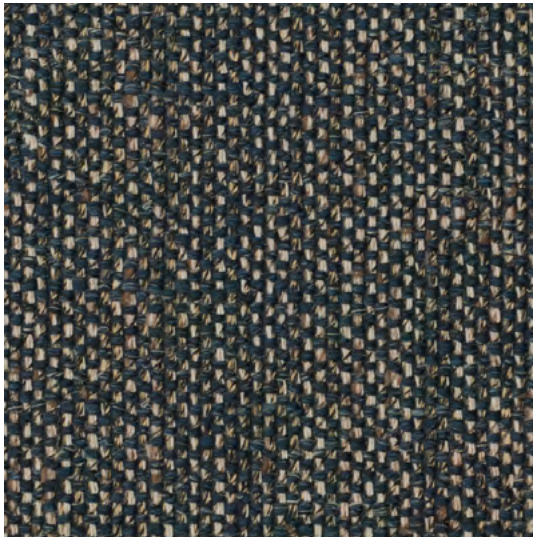


7980 ALABASTER
Natural Elegance Off White FR



7981 SHINGLE
Natural Elegance Melange FR

TOGBA FR



7852 BLUE BRONZE

Material
Material 41% Viskose/*Viscose*
26% Polyacryl/*Polyacrylic*
18% Baumwolle/*Cotton*
7% Leinen/*Linen*
7% Polyester/*Polyester*
1% Seide/*Silk*

Stoffart
Fabric type Flachgewebe
Flat woven fabric

Scheuertouren
Martindale cycles 16.000

Lichtechtheit
Fastness to light 5 (ISO 1–8)

Brandschutz
Fire protection BS 5852 Part 1 Ignition Source 0
BS 5852 Part 1 Ignition Source 1
Cal. TB 117-2013

Pflegehinweise
Care cleaning



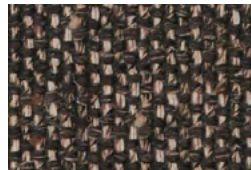
Preisgruppe
Price group 25



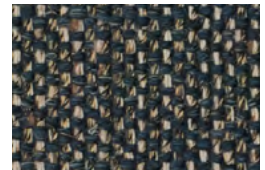
7854 PEBBLE
Natural Elegance Melange FR



7855 SAHARA
Natural Elegance Melange FR



7850 TOBACCO
Natural Elegance Moonlight FR





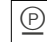


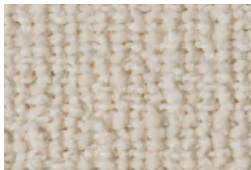
7852 BLUE BRONZE
Natural Elegance Africa FR

TONGA FR



7620 MINERAL

Material <i>Material</i>	48% Polyacryl/ <i>Polyacrylic</i> 24% Wolle/ <i>Wool</i> 12% Polyester/ <i>Polyester</i> 10% Nylon/ <i>Nylon</i> 6% Baumwolle/ <i>Cotton</i>
Stoffart <i>Fabric type</i>	Flachgewebe mit Fleckschutz <i>Flat woven fabric with spot protection</i>
Scheuertouren <i>Martindale cycles</i>	35.000
Lichtechtheit <i>Fastness to light</i>	4–5 (ISO 1–8)
Brandschutz <i>Fire protection</i>	BS 5852 Part 1 Ignition Source 0 BS 5852 Part 1 Ignition Source 1 Cal. TB 117-2013
Pflegehinweise <i>Care cleaning</i>	    
Preisgruppe <i>Price group</i>	25



7615 OFF WHITE
Natural Elegance Off White FR



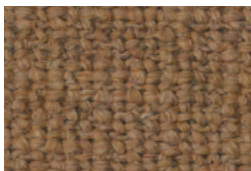
7618 SHADOW
Natural Elegance Shadow FR



7621 CHALK
Natural Elegance Timber FR



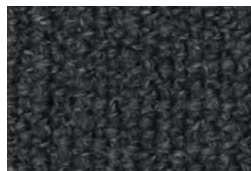
7623 SAHARA
Natural Elegance Timber FR



7622 AMBER
Natural Elegance Timber FR



7620 MINERAL
Natural Elegance Timber FR








7617 CHESS
Natural Elegance Chess FR

WEAVE FR

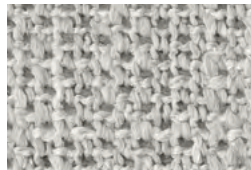


7755 SHADOW

Material <i>Material</i>	50% Leinen/ <i>Linen</i> 19% Baumwolle/ <i>Cotton</i> 14% Viskose/ <i>Viscose</i> 10% Polyacryl/ <i>Polyacrylic</i> 7% Nylon/ <i>Nylon</i>
Stoffart <i>Fabric type</i>	Flachgewebe <i>Flat woven fabric</i>
Scheuertouren <i>Martindale cycles</i>	15.000
Lichtechtheit <i>Fastness to light</i>	4 – 5 (ISO 1 – 8)
Brandschutz <i>Fire protection</i>	BS 5852 Part 1 Ignition Source 0 BS 5852 Part 1 Ignition Source 1
Pflegehinweise <i>Care cleaning</i>	    
Preisgruppe <i>Price group</i>	28



7757 PEARL
Natural Elegance Melange FR



7756 SILVER
Natural Elegance Melange FR



7755 SHADOW
Natural Elegance Melange FR

»NATURAL ELEGANCE« FARBWELTEN – STOFFE / MIT BRANDSCHUTZ
»Natural Elegance« color worlds – fabrics / fire-resistant



»AFRICA FR«
 10 Stoffe/fabrics

*Lucia 7694 corn
 Lucia 7688 turquoise
 Aurene 7982 belladonna
 Togba 7852 blue bronze
 Namib 7922 marula
 Namib 7927 red sand
 Selene 8001 auburn
 Ruban 7943 rosy
 Namib 7923 rooibos
 Lucia 7686 tomato*

»CHESS FR«
 9 Stoffe/fabrics

*Tonga 7617 chess
 Namib 7924 limestone
 Selene 8002 graphite
 Ruban 7942 onyx
 Lucia 7680 moonlight
 Lucia 7681 mineral
 Glint 7760 steel
 Namib 7925 aqua
 Glint 7762 ash*

»DOUX FR«
 5 Stoffe/fabrics

*7840 granite
 7841 sand
 7842 mineral
 7843 pebble
 7844 greige*

»MELANGE FR«
 9 Stoffe/fabrics

*Glint 7764 melange
 Ruban 7940 milky quartz
 Weave 7757 pearl
 Tapis 7981 shingle
 Selene 7999 tin
 Weave 7756 silver
 Togba 7855 sahara
 Weave 7755 shadow
 Togba 7854 pebble*

»MOONLIGHT FR«
 8 Stoffe/fabrics

*Namib 7921 oryx
 Lucia 7739 lagoon
 Aurene 7983 moss
 Namib 7926 reed
 Lucia 7729 aquamarine
 Namib 7920 moon
 Selene 8000 opaline
 Togba 7850 tobacco*

»OFF WHITE FR«
 9 Stoffe/fabrics

*Selene 7997 cotton
 Lucia 7685 off white
 Tapis 7980 alabaster
 Safire 0007 champagne
 Safire 0014 desert
 Tonga 7615 off white
 Selene 7998 coquina
 Ruban 7941 light grey
 Glint 7763 silver*

»SHADOW FR«
 10 Stoffe/fabrics

*Savannah 7884 jade
 Lucia 7704 glacier
 Safire 0006 sage
 Glint 7778 stone
 Savannah 7880 glycine
 Tonga 7618 shadow
 Savannah 7883 platinum
 Ruban 7945 flintstone
 Ruban 7946 moss
 Glint 7761 shadow*

»TIMBER FR«
 10 Stoffe/fabrics

*Lucia 7698 cinnamon
 Ruban 7944 ecru
 Tonga 7622 amber
 Savannah 7881 carline
 Tonga 7623 sahara
 Lucia 7695 nutmeg
 Tonga 7620 mineral
 Savannah 7882 rose
 Tonga 7621 chalk
 Safire 0004 soil*

